

- REFERENCE NOTES**
- A. PAVEMENT DIMENSIONS ARE TO BACK OF CURB
 - B. BASELINE IS CENTRE LINE RIGHT-OF-WAY
 - C. PROPERTY LINES OBTAINED FROM CITY OF WINNIPEG L.B.I.S., AND NO SCALE FACTOR WAS APPLIED
 - D. REFER TO AECOM FIELD BOOK NO. 5036

- CONSTRUCTION NOTES**
1. PLANE EXISTING ASPHALTIC PAVEMENT
 2. CONSTRUCT NEW ASPHALTIC PAVEMENT TYPE 1A (85mm TYP.)
 3. REMOVE EXISTING CONCRETE AND CONSTRUCT NEW 150mm REINFORCED CONCRETE PAVEMENT c/w 85mm ASPHALTIC OVERLAY
 4. PLANE EXISTING BARRIER CURB AND INSTALL NEW CONCRETE BARRIER CURB (100mm REVEAL HT. DOWELLED)
 5. CONSTRUCT NEW CONCRETE MODIFIED BARRIER CURB (150mm REVEAL HT. DOWELLED)
 6. CONSTRUCT NEW LIP CURB (40mm REVEAL HT. INTEGRAL)
 7. RENEW EXISTING 100mm CONCRETE SIDEWALK
 8. REMOVE EXISTING CATCHPIT / CURB INLET AND ABANDON LEAD
 9. INSTALL NEW CATCHBASIN 1200mm (SD-024) c/w CURB AND GUTTER INLET FRAME AND COVER AND CONNECT TO EXISTING LEAD
 10. ADJUST EXISTING WATER VALVE TO GRADE
 11. CONSTRUCT NEW CONCRETE BARRIER CURB (100mm REVEAL HT. SEPARATE)
 12. REGRADE PAVING STONES
 13. ADJUST EXISTING MANHOLE/CATCHBASIN FRAME TO GRADE

- WORK BY OTHERS**
1. RELOCATE EXISTING LIGHT STANDARDS (HYDRO)

EXISTING	LEGEND - PLAN	PROPOSED	EXISTING	LEGEND - PLAN	PROPOSED	EXISTING	LEGEND - PROFILE	PROPOSED
	WATERMAIN			HYDRO M.T.S.			NORTH GUTTER	
	VALVE			CONCRETE			SOUTH GUTTER	
	LAND DRAINAGE SEWER			ASPHALT			N/W PROPERTY LINE	
	WASTEWATER SEWER			PROPERTY LINE			S/E PROPERTY LINE	
	MANHOLE			SURVEY BAR				
	CATCH BASIN			ELEVATION				
	CATCH PIT			TREE				
	JUNCTIONS			SIDEWALK RAMP				
	CULVERT			CONCRETE SIDEWALK				
	GAS			FENCE				

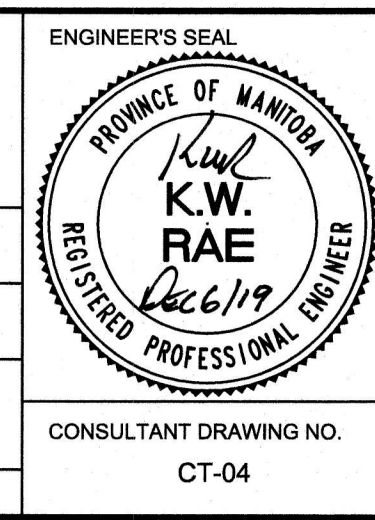
LOCATION APPROVED UNDERGROUND STRUCTURES

SUPV. U/G STRUCTURES COMMITTEE DATE

NOTE:
LOCATION OF UNDERGROUND STRUCTURES AS SHOWN ARE BASED ON THE BEST INFORMATION AVAILABLE. BUT NO GUARANTEE IS GIVEN THAT ALL EXISTING UTILITIES ARE SHOWN OR THAT THE GIVEN LOCATIONS ARE EXACT. CONFIRMATION OF EXISTENCE AND EXACT LOCATION OF ALL SERVICES MUST BE OBTAINED FROM THE INDIVIDUAL UTILITIES BEFORE PROCEEDING WITH CONSTRUCTION.

B.M. 50-047	548233 Shaftesbury Blvd & Mountbatten Ave. in median of Shaftesbury Blvd., Tbl., 25.1 m E. of W.L. of Shaftesbury Blvd.		
ELEV. 235.487			
0	ISSUED FOR TENDER	12/08/2019	BC
A	ISSUED FOR REVIEW	04/04/2019	BC
NO.	REVISIONS	DATE	BY

AECOM	
DESIGNED BY	JC
CHECKED BY	BC/KWR
DRAWN BY	JC
APPROVED BY	
HOR. SCALE:	1:250
VERTICAL:	1:10
RELEASED FOR CONSTRUCTION BY:	
DATE	DEC 5/19



THE CITY OF WINNIPEG
PUBLIC WORKS DEPARTMENT
ENGINEERING DIVISION

2019 LOCAL STREET RENEWAL PROGRAM

MOUNTBATTEN AVENUE - SHAFTESBURY BLVD TO BOWER BLVD
PAVEMENT REHABILITATION
SHAFTESBURY BOULEVARD TO BOWER BOULEVARD

CITY DRAWING NUMBER
SHEET 04 OF 10

CONSULTANT DRAWING NO. CT-04



METRIC
WHOLE NUMBERS INDICATE MILLIMETRES
DECIMALIZED NUMBERS INDICATE METRES